



HOT DIAMONDS  
x Gemstones Collection

Autumn/Winter 2024

Here's what you get with

# HOT DIAMONDS x Gemstones Collection

## | The jewels:

- 50 beautiful and contemporary gemstone designs
- Crafted from 925 silver with 18ct gold plate and some rhodium finish designs
- Always natural gemstones
- Every design hand-set with a real diamond
- Ethical sourcing (certified member of the RJC)

## | The display:

- Free luxury display with opening pack order
- Display graphics to story-tell the meaning of each gemstone thus providing strong sales hooks
- 60cm full display width, but segmented display for full flexibility
- Pricing tags supplied with each design



## | The packaging:

- Luxury jewellery box and bag, provided with each design ordered
- Mini catalogue supplied with each design ordered



## | The marketing:

- Sales are driven by constant influencer support
- Constant press campaign from leading London PR agency
  - Press coverage
  - Influencer awareness
  - Product placement
- Free bespoke point of sale materials provided on request
- Industry leading model imagery
- Free Facebook competition sample with opening order
- Free wearer trial sample with opening order
- Market leading social and creative assets available from drop box assets library
- E-commerce upload spreadsheet available on request

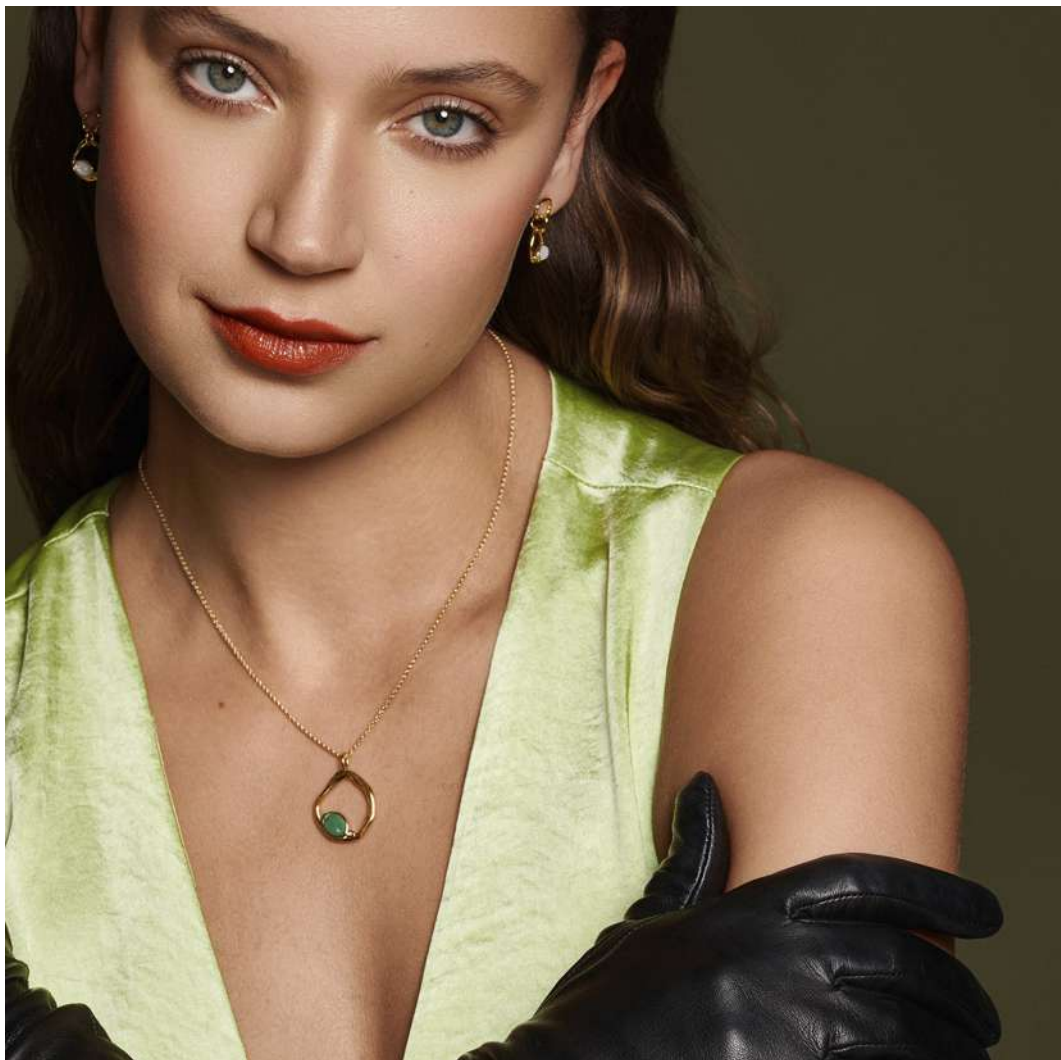
## | The opening pack:

- The opening pack is £2000 (TBC)
- This includes the free luxury display and packaging for all designs

### **What you get when you work with HD Group:**

- 4 Brand Manager visits per year
  - Staff training
  - Merchandising support
  - Newness presentation
- Staff incentive schemes on request
- Up to 5 months payment terms for Autumn/Winter and Spring/Summer investments
- Stock rebalancing at Brand Manager discretion
- In-store bespoke display assets provided on request
- Social creative assets available on dropbox
- Same day dispatch for orders placed before 13:00
- Industry leading customer services team





All designs are in either rhodium or 18ct gold-plated 925 sterling silver with at least one real diamond.  
Rings available in sizes XS to XL.



**OFFSET PENDANT -  
TIGERS EYE**  
chain: 16-18" (40-45cm)  
€140 (DPI023)



**OFFSET EARRINGS -  
GREEN AGATE**  
chain: 16-18" (40-45cm)  
€150 (DE815)



**OFFSET PENDANT -  
TIGERS EYE**  
chain: 16-18" (40-45cm)  
€140 (DPI025)



**OFFSET EARRINGS -  
MOTHER OF PEARL**  
€150 (DE814)



**OFFSET PENDANT -  
GREEN AGATE**  
chain: 16-18" (40-45cm)  
€140 (DPI024)



**OFFSET EARRINGS -  
TIGERS EYE**  
chain: 16-18" (40-45cm)  
€150 (DE816)

All designs are in either rhodium or 18ct gold-plated 925 sterling silver with at least one real diamond.  
Rings available in sizes XS to XL.

NEW

**TEARDROP PENDANT -  
TIGERS EYE**

chain: 16-18" (40-45cm)  
€165 (DPI028)



**TEARDROP PENDANT -  
GREEN AGATE**

chain: 16-18" (40-45cm)  
€165 (DPI026)



**TEARDROP PENDANT -  
MOTHER OF PEARL**

chain: 16-18" (40-45cm)  
€165 (DPI027)

**TEARDROP EARRINGS -  
TIGERS EYE**

€220 (DE819)



**TEARDROP EARRINGS -  
GREEN AGATE**

€220 (DE817)

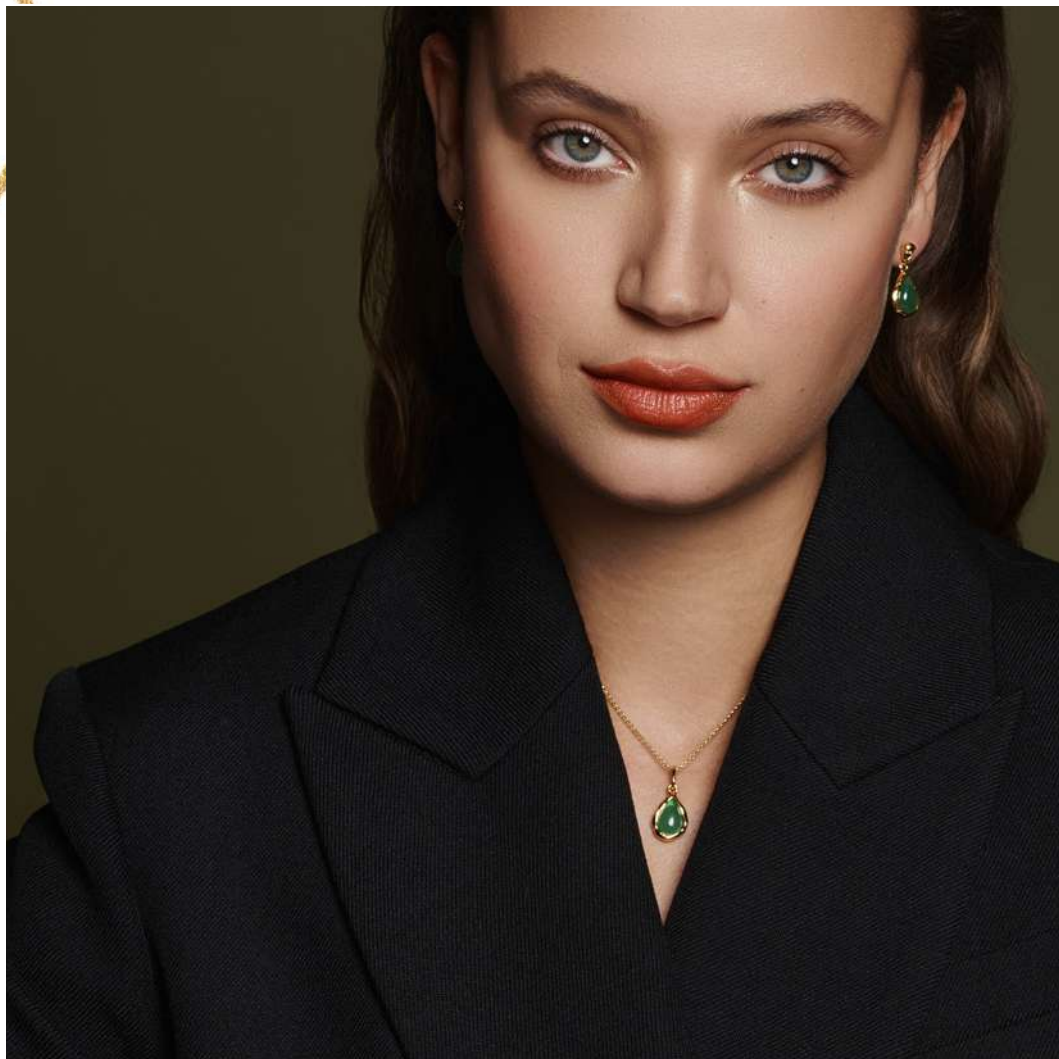


**TEARDROP EARRINGS -  
MOTHER OF PEARL**

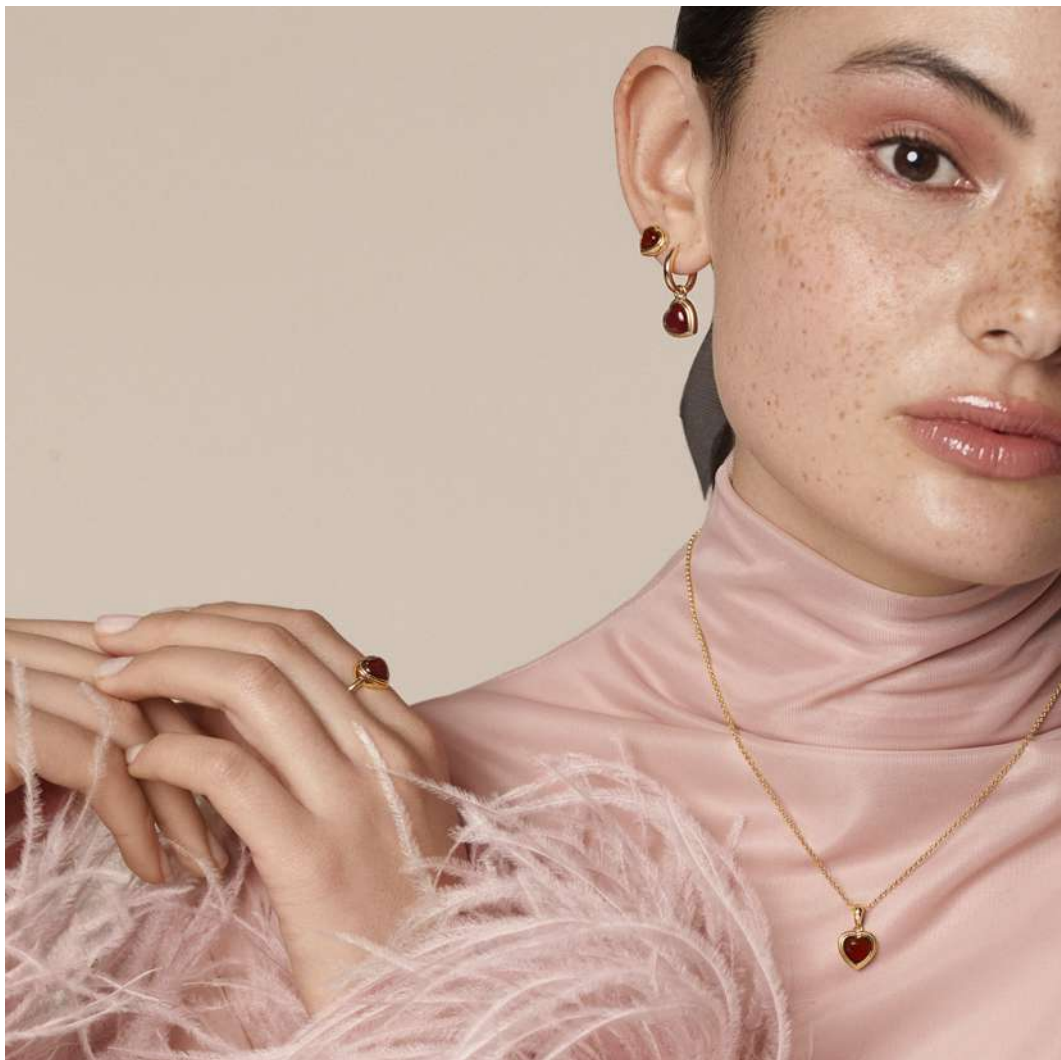
€220 (DE818)







All designs are in either rhodium or 18ct gold-plated 925 sterling silver with at least one real diamond.  
Rings available in sizes XS to XL.



All designs are in either rhodium or 18ct gold-plated 925 sterling silver with at least one real diamond.  
Rings available in sizes XS to XL.

## HOT DIAMONDS / Gemstones



**HEART STUD EARRINGS -  
RED AGATE**  
€105 (DE796)



**HEART EARRINGS - RED  
AGATE**  
€175 (DE797)

**HEART PENDANT -  
RED AGATE**  
chain: 16-18" (40-45cm)  
€115 (DP1001)



**HEART RING - RED AGATE**  
€115 (DR285)



**HEART BANGLE - RED  
AGATE**  
€220 (DC194)

All designs are in either rhodium or 18ct gold-plated 925 sterling silver with at least one real diamond.  
Rings available in sizes XS to XL.

## HOT DIAMONDS / Gemstones



**OVAL NECKLACE -  
MOTHER OF PEARL**  
chain: 16-18" (40-45cm)  
€115 (DN200)

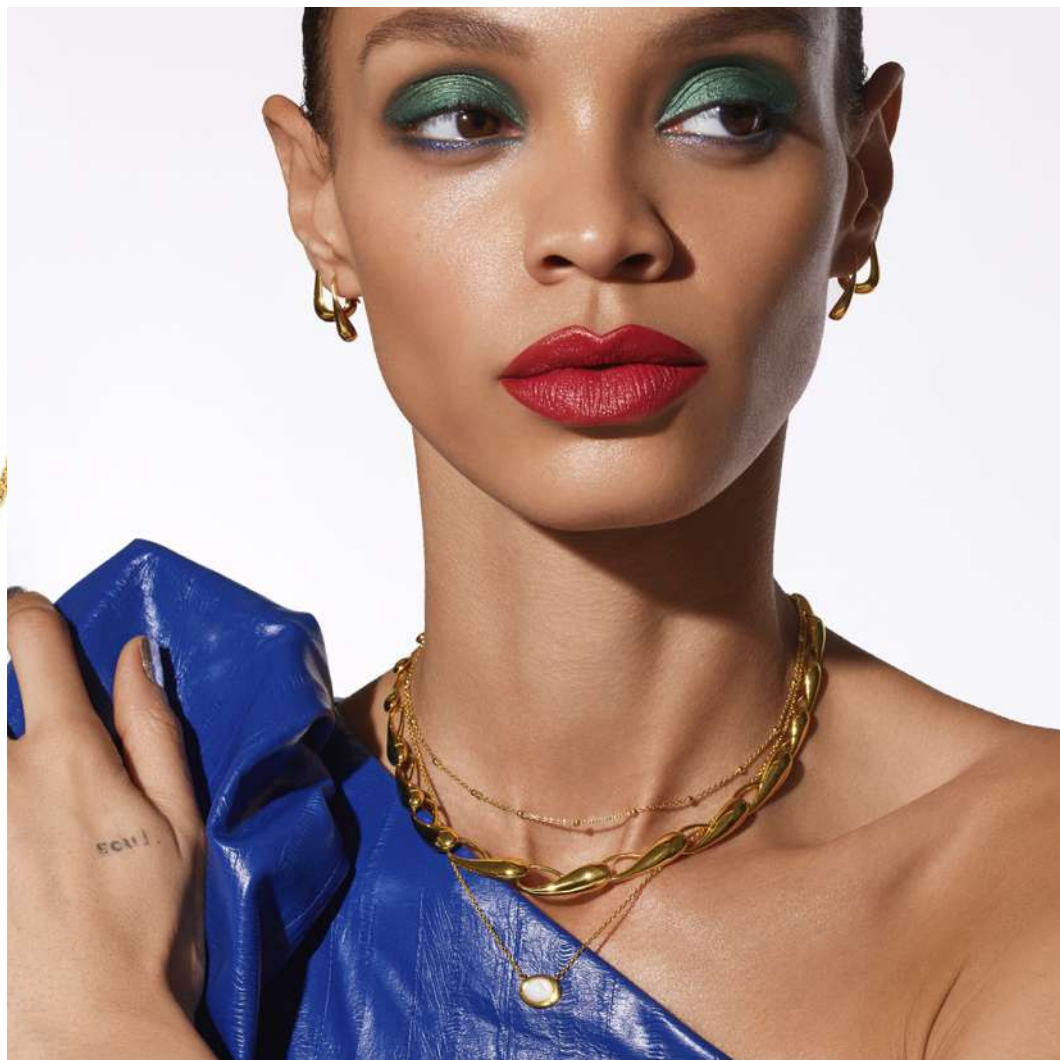


**OVAL NECKLACE -  
TIGERS EYE**  
chain: 16-18" (40-45cm)  
€115 (DN201)



**OVAL NECKLACE - BLUE  
LACE AGATE**  
chain: 16-18" (40-45cm)  
€115 (DN202)

All designs are in either rhodium or 18ct gold-plated 925 sterling silver with at least one real diamond.  
Rings available in sizes XS to XL.



All designs are in either rhodium or 18ct gold-plated 925 sterling silver with at least one real diamond.  
Rings available in sizes XS to XL.

## HOT DIAMONDS / Gemstones



**DROPLET NECKLACE**  
chain: 16-18" (40-45cm)  
€115 (DN196)



**SQUARE NECKLACE -  
GREEN AGATE**  
chain: 16-18" (40-45cm)  
€115 (DN197)



**SQUARE NECKLACE -  
MOTHER OF PEARL**  
chain: 16-18" (40-45cm)  
€115 (DN198)

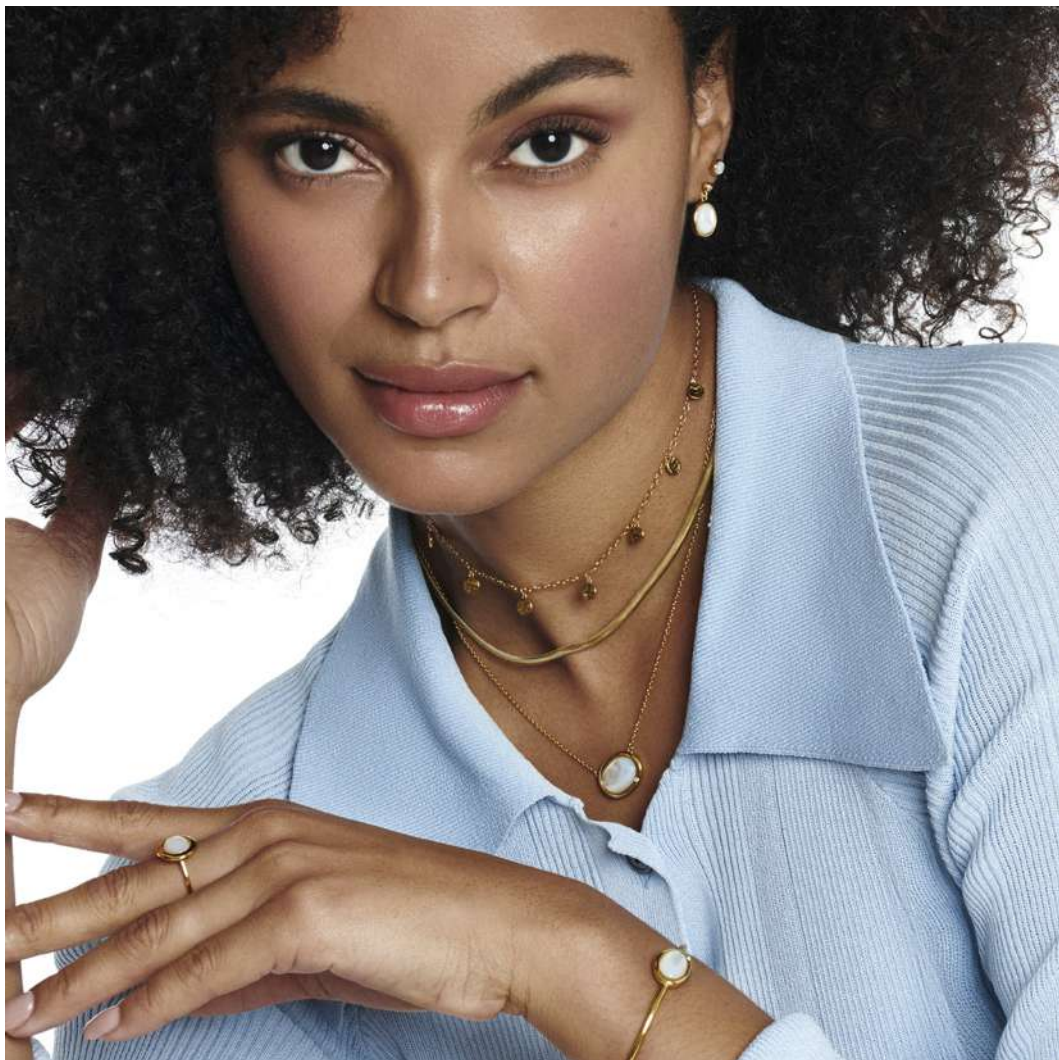


**SQUARE NECKLACE -  
TIGERS EYE**  
chain: 16-18" (40-45cm)  
€115 (DN199)

All designs are in either rhodium or 18ct gold-plated 925 sterling silver with at least one real diamond.  
Rings available in sizes XS to XL.



All designs are in either rhodium or 18ct gold-plated 925 sterling silver with at least one real diamond.  
Rings available in sizes XS to XL.



All designs are in either rhodium or 18ct gold-plated 925 sterling silver with at least one real diamond.  
Rings available in sizes XS to XL.



# HOT DIAMONDS / Gemstones



**HORIZONTAL OVAL  
EARRINGS - MOTHER OF  
PEARL**

€120 (DE775)



**HORIZONTAL OVAL  
NECKLACE - MOTHER OF  
PEARL**

chain: 16-18" (40-45cm)  
€175 (DN186)



**HORIZONTAL OVAL  
NECKLACE - TIGERS EYE**

chain: 16-18" (40-45cm)  
€175 (DN188)



**HORIZONTAL OVAL  
EARRINGS - TIGERS EYE**

€120 (DE777)



**HORIZONTAL OVAL  
NECKLACE - BLUE LACE  
AGATE**

chain: 16-18" (40-45cm)  
€175 (DN187)



**HORIZONTAL OVAL  
EARRINGS - BLUE LACE  
AGATE**

€120 (DE776)

All designs are in either rhodium or 18ct gold-plated 925 sterling silver with at least one real diamond.  
Rings available in sizes XS to XL.

## HOT DIAMONDS / Gemstones



**HORIZONTAL OVAL  
RING - MOTHER OF PEARL**  
€100 (DR270)



**OVAL NECKLACE -  
MOTHER OF PEARL**  
chain: 16-18" (40-45cm)  
€175 (DNI89)



**HORIZONTAL OVAL  
RING - BLUE LACE AGATE**  
€100 (DR271)



**OVAL NECKLACE - BLUE  
LACE AGATE**  
chain: 16-18" (40-45cm)  
€175 (DNI90)



**HORIZONTAL OVAL  
RING - TIGERS EYE**  
€100 (DR272)

All designs are in either rhodium or 18ct gold-plated 925 sterling silver with at least one real diamond.  
Rings available in sizes XS to XL.



**HORIZONTAL OVAL  
BANGLE - MOTHER OF  
PEARL**  
€245 (DC181)



**HORIZONTAL OVAL  
BANGLE - BLUE LACE  
AGATE**  
€245 (DC182)



**HORIZONTAL OVAL  
BANGLE - TIGERS EYE**  
€245 (DC183)

All designs are in either rhodium or 18ct gold-plated 925 sterling silver with at least one real diamond.  
Rings available in sizes XS to XL.

## HOT DIAMONDS / Gemstones



**DROPLET EARRINGS -  
WHITE TOPAZ**  
€90 (DE774)



**DROPLET NECKLACE -  
WHITE TOPAZ**  
chain: 16-18" (40-45cm)  
€190 (DN185)

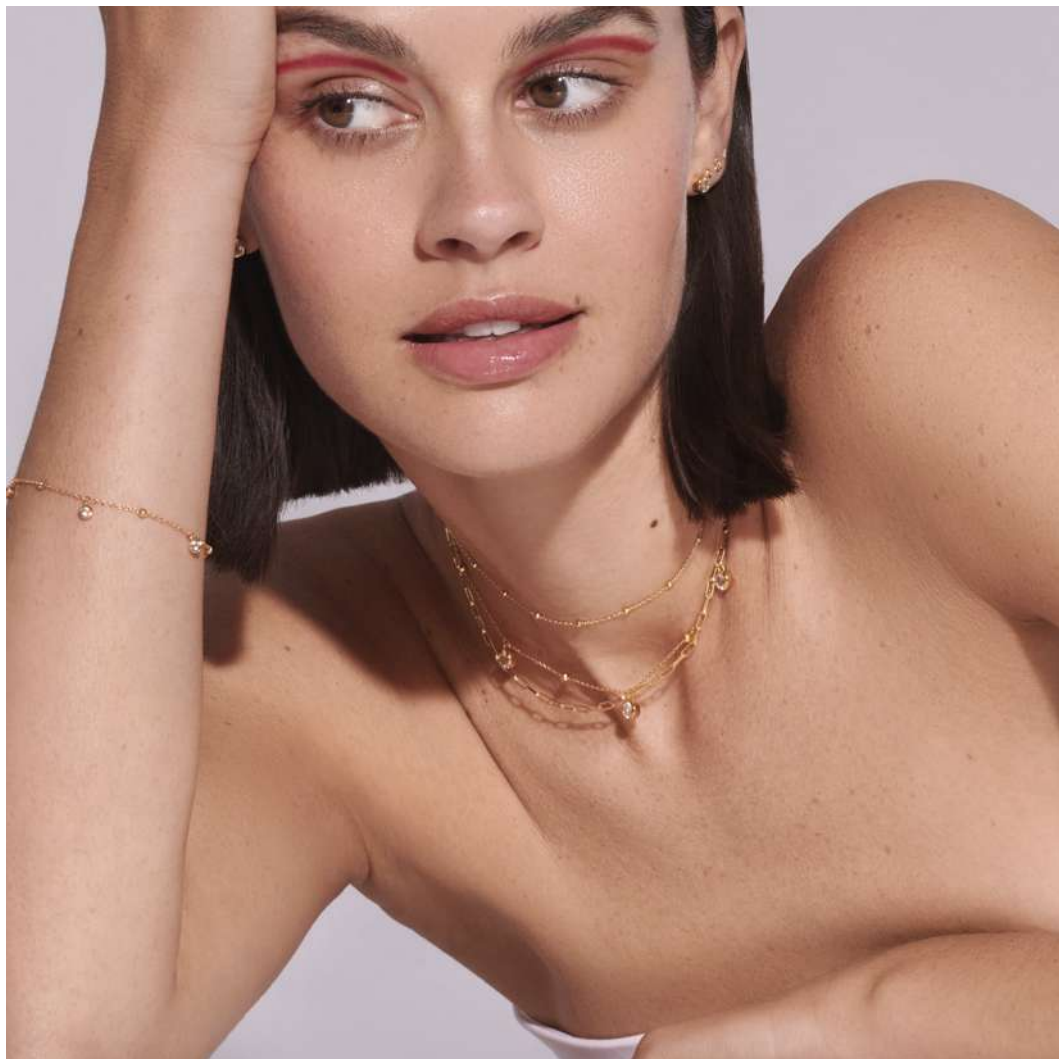


**DROPLET BRACELET -  
WHITE TOPAZ**  
€140 (DL665)

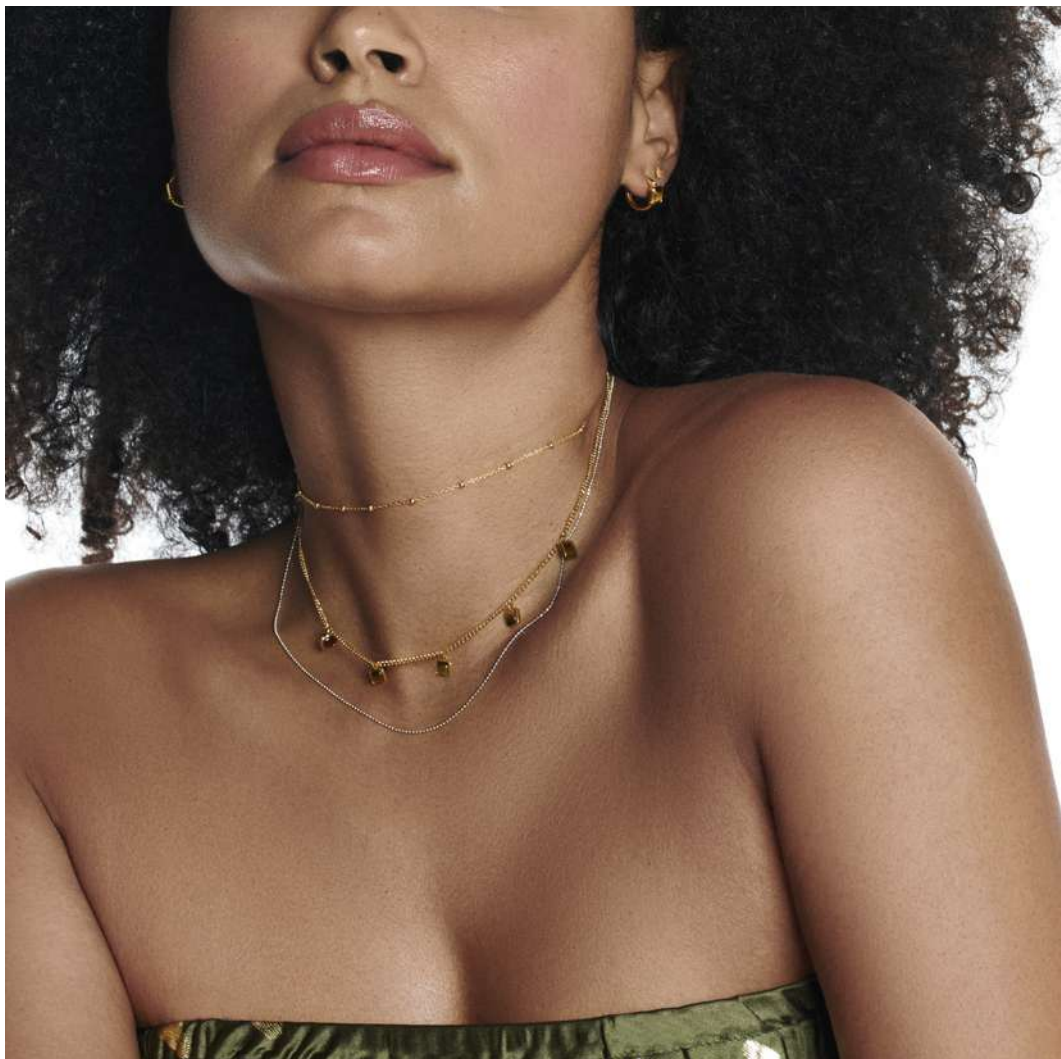


**DROPLET CHAIN  
EARRINGS - WHITE TOPAZ**  
€100 (DE773)

All designs are in either rhodium or 18ct gold-plated 925 sterling silver with at least one real diamond.  
Rings available in sizes XS to XL.



All designs are in either rhodium or 18ct gold-plated 925 sterling silver with at least one real diamond.  
Rings available in sizes XS to XL.



All designs are in either rhodium or 18ct gold-plated 925 sterling silver with at least one real diamond.  
Rings available in sizes XS to XL.

## HOT DIAMONDS / Gemstones



### SQUARE NECKLACE - TIGERS EYE

chain: 16-18" (40-45cm)  
€190 (DNI84)



### SQUARE HUGGIE EARRINGS - TIGERS EYE

€100 (DE769)



### SQUARE EARRINGS - TIGERS EYE

€90 (DE772)



### SQUARE RING - TIGERS EYE

€120 (DR266)



### SQUARE STEPPED RING - TIGERS EYE

€120 (DR269)



### SQUARE BRACELET - TIGERS EYE

€175 (DL664)

All designs are in either rhodium or 18ct gold-plated 925 sterling silver with at least one real diamond.  
Rings available in sizes XS to XL.

## HOT DIAMONDS / Gemstones

### SQUARE NECKLACE - MOTHER OF PEARL

chain: 16-18" (40-45cm)

€190 (DNI82)



### SQUARE HUGGIE EARRINGS - MOTHER OF PEARL

€100 (DE767)



### SQUARE EARRINGS - TIGERS EYE

€90 (DE770)



### SQUARE RING - MOTHER OF PEARL

€120 (DR264)



### SQUARE STEPPED RING - MOTHER OF PEARL

€120 (DR267)

### SQUARE BRACELET - MOTHER OF PEARL

€175 (DL662)

All designs are in either rhodium or 18ct gold-plated 925 sterling silver with at least one real diamond.  
Rings available in sizes XS to XL.



## HOT DIAMONDS / Gemstones

### SQUARE NECKLACE - GREEN AGATE

chain: 16-18" (40-45cm)

€190 (DNI83)



### SQUARE HUGGIE EARRINGS - GREEN AGATE

€100 (DE768)



### SQUARE EARRINGS - TIGERS EYE

€90 (DE771)



### SQUARE RING - GREEN AGATE

€120 (DR265)



### SQUARE STEPPED RING - GREEN AGATE

€120 (DR268)



### SQUARE BRACELET - GREEN AGATE

€175 (DL663)

All designs are in either rhodium or 18ct gold-plated 925 sterling silver with at least one real diamond.  
Rings available in sizes XS to XL.



**RECTANGLE NECKLACE -  
GREEN CHALCEDONY**

chain: 16-18" (40-45cm)  
€140 (DN181)



**RECTANGLE EARRINGS -  
GREEN CHALCEDONY**

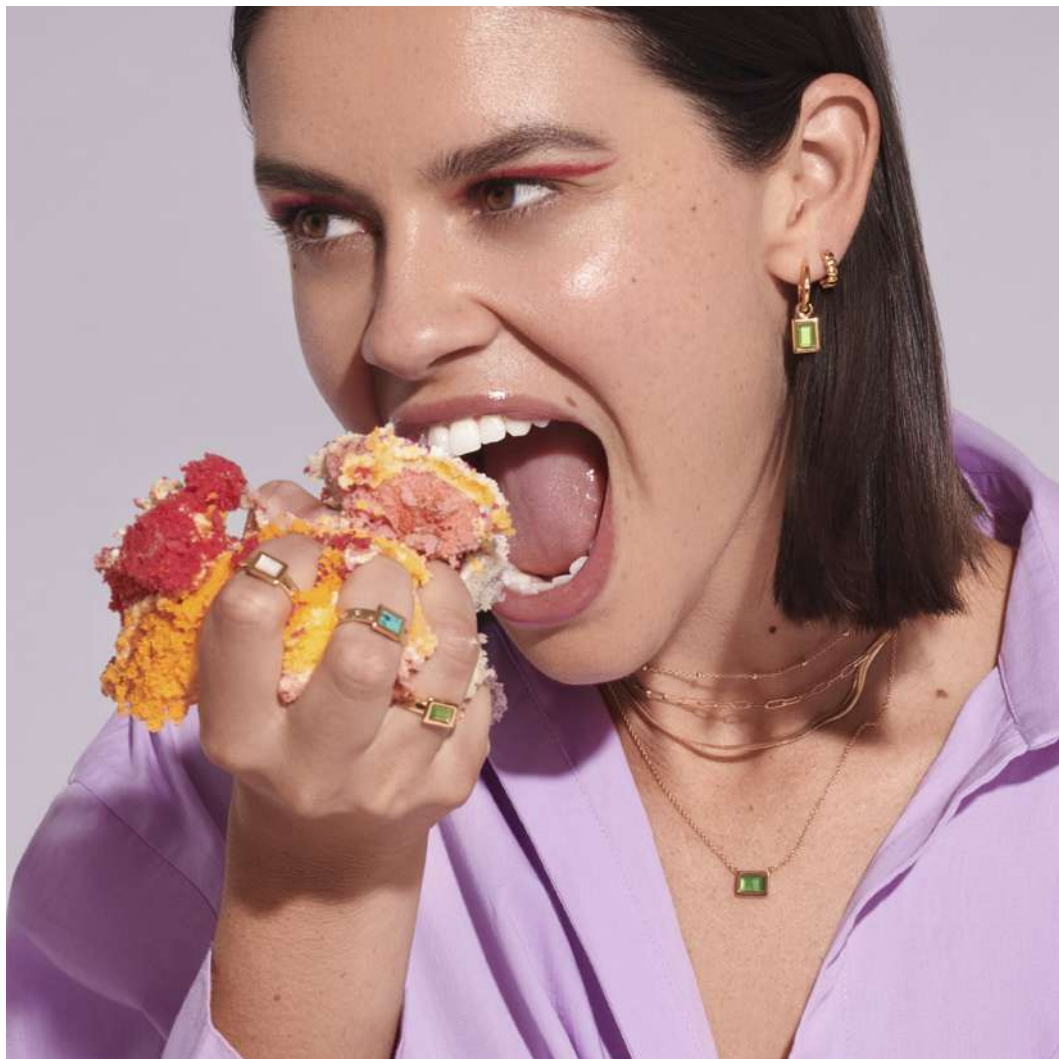
€165 (DE766)



**RECTANGLE RING - GREEN  
CHALCEDONY**

€140 (DR263)

All designs are in either rhodium or 18ct gold-plated 925 sterling silver with at least one real diamond.  
Rings available in sizes XS to XL.



All designs are in either rhodium or 18ct gold-plated 925 sterling silver with at least one real diamond.  
Rings available in sizes XS to XL.



**RECTANGLE NECKLACE -  
TURQUOISE**

chain: 16-18" (40-45cm)  
€140 (DN179)



**RECTANGLE EARRINGS -  
TURQUOISE**

€165 (DE764)



**RECTANGLE RING -  
TURQUOISE**

€140 (DR261)

All designs are in either rhodium or 18ct gold-plated 925 sterling silver with at least one real diamond.  
Rings available in sizes XS to XL.



**RECTANGLE NECKLACE -  
MOTHER OF PEARL**

chain: 16-18" (40-45cm)  
€140 (DN180)



**RECTANGLE EARRINGS -  
MOTHER OF PEARL**

€165 (DE765)



**RECTANGLE RING -  
MOTHER OF PEARL**

€140 (DR262)

All designs are in either rhodium or 18ct gold-plated 925 sterling silver with at least one real diamond.  
Rings available in sizes XS to XL.



All designs are in either rhodium or 18ct gold-plated 925 sterling silver with at least one real diamond.  
Rings available in sizes XS to XL.

## HOT DIAMONDS / Gemstones



**COIN PENDANT - PINK  
QUARTZ**

chain: 16-18" (40-45cm)  
€155 (DP936)



**COIN PENDANT - GREEN  
AGATE**

chain: 16-18" (40-45cm)  
€155 (DP935)



**COIN PENDANT - RED  
AGATE**

chain: 16-18" (40-45cm)  
€155 (DP934)

All designs are in either rhodium or 18ct gold-plated 925 sterling silver with at least one real diamond.  
Rings available in sizes XS to XL.

## HOT DIAMONDS / Gemstones



**STARBURST LOCKET - RED  
AGATE**

chain: 16-18" (40-45cm)  
€190 (DP931)



**STARBURST LOCKET -  
GREEN AGATE**

chain: 16-18" (40-45cm)  
€190 (DP932)



**STARBURST LOCKET -  
WHITE TOPAZ**

chain: 16-18" (40-45cm)  
€190 (DP933)

All designs are in either rhodium or 18ct gold-plated 925 sterling silver with at least one real diamond.  
Rings available in sizes XS to XL.





All designs are in either rhodium or 18ct gold-plated 925 sterling silver with at least one real diamond.  
Rings available in sizes XS to XL.



**INTERMITTENT BEAD  
CABLE CHAIN CHOKER**  
€35 (CH123)



**INTERMITTENT OVAL  
CHAIN**  
€55 (CH125)



**DIAMOND CUT OVAL  
CHAIN**  
€50 (CH126)

All designs are in either rhodium or 18ct gold-plated 925 sterling silver with at least one real diamond.  
Rings available in sizes XS to XL.

## HOT DIAMONDS / Chains



**MULTI-LINK  
PAPERCLIP CHAIN**  
€70 (CHI27)



**PAPERCLIP CHAIN**  
€70 (CHI28)



**SNAKE CHAIN**  
€60 (CHI29)



**STATEMENT  
LINK CHAIN**  
€180 (CHI30)

All designs are in either rhodium or 18ct gold-plated 925 sterling silver with at least one real diamond.  
Rings available in sizes XS to XL.

Thank you for your time

# HOT DIAMONDS x Gemstones Collection

## | Brand Managers

■ Joan Raitt  
T: 07717 861 262  
E: joan.raitt@hdgroup.com

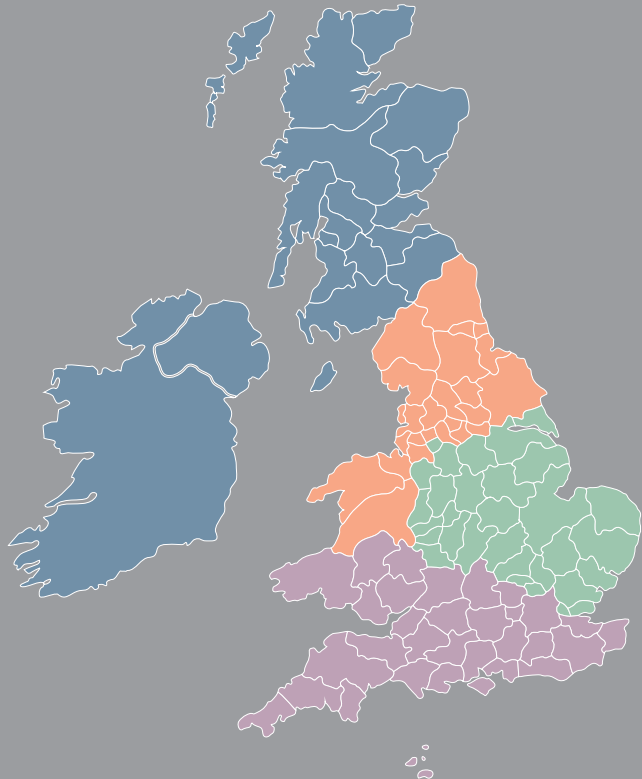
■ Chris McKenna  
T: 07485 394 789  
E: christine.mckenna@hdgroup.com

■ Chloe Lewis  
T: 07717 508 603  
E: chloe.lewis@hdgroup.com

■ Andrew Lewis  
T: 07717 861 669  
E: Andrew.Lewis@HDGroup.com

## | Head Office

**Customer Services**  
T: 0118 975 3331  
E: cs@hdgroup.com



hotdiamonds.com